



VAFFC / Vancouver Airport
Fuel Facilities Corporation

AN **FSM GROUP** MANAGED CORPORATION



About This Brochure

The Operator (SGS Canada Inc.), on behalf of the Vancouver Airport Fuel Facility Corporation (VAFFC), distributes this pamphlet annually to all commercial and residential addresses within a 200-meter radius of the Vancouver Airport Fuel Facility Pipeline's centerline as part of the public awareness and safety process to ensure that you are aware of the operations in the area.

Pipelines are a safe and efficient means of transporting large quantities of fuels. VAFFC's Pipeline and related facilities are designed, constructed, and operated in a safe and environmentally responsible manner.

Although the probability of an incident is low, VAFFC works diligently to protect your safety, including advising you on the following safety information:

- » The presence and general location of the Pipeline and related facilities;
- » The Emergency Response Measures and understand how they function;
- » The methods of communication to be used in case of an emergency;
- » How to safely work near the Pipeline.
- » Third-party crossings, encroachments, and ground disturbances within the Pipeline's Prescribed Area, including all required request information for such activities.
- » How to report unexpected situations related to the Pipeline and related facilities that could endanger the public or cause substantial property or environmental damage – requiring immediate action;
- » How to report any contact with the pipe or its coating, with or without damage to the pipe;
- » The existence and services of the BC One Call Centre and how to make locate requests;
- » The request and authorization process for all

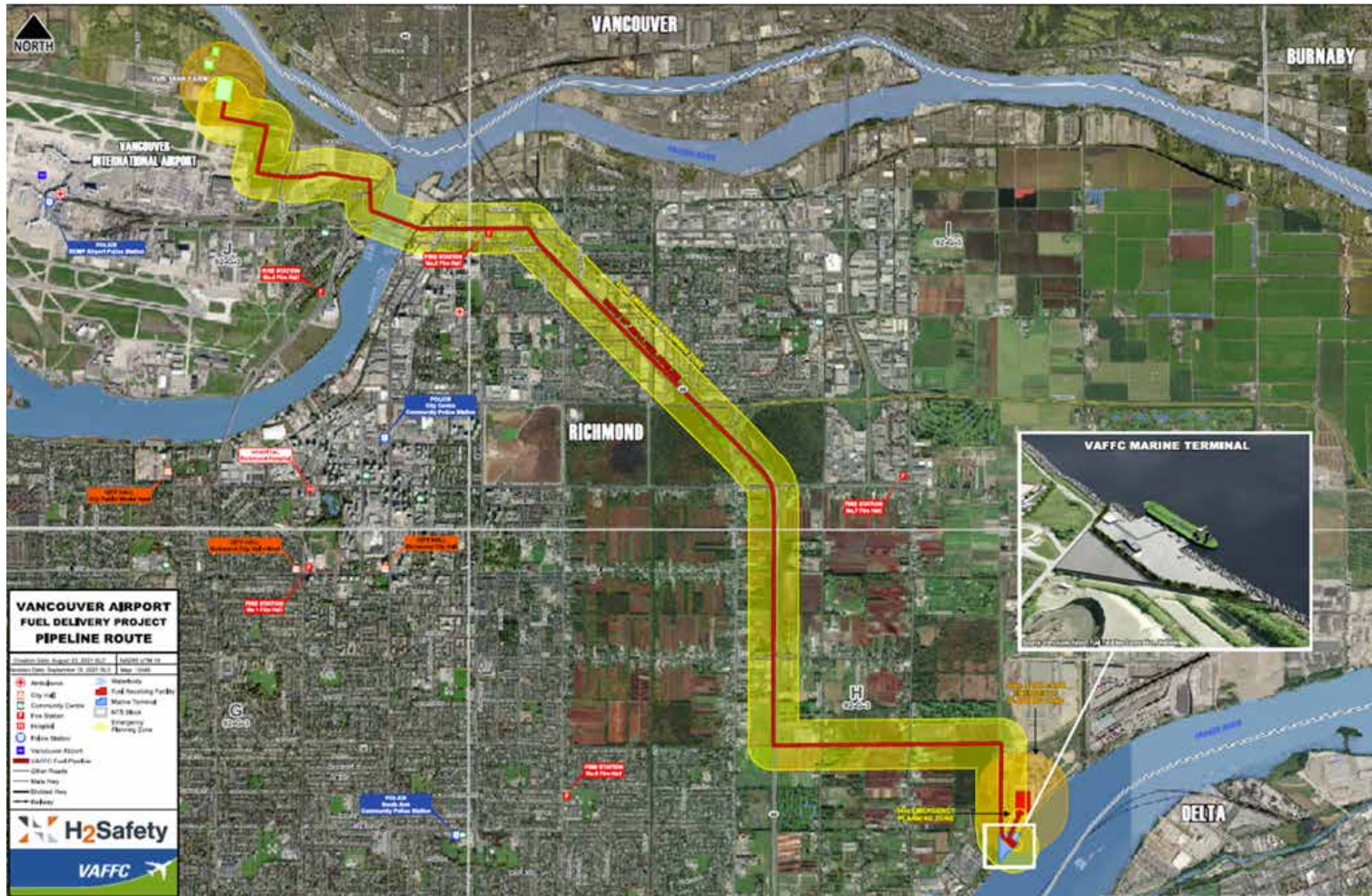
About VAFFC and the System

VAFFC is a not-for-profit corporation owned by a consortium of commercial airlines representing most of the domestic and international carriers serving Vancouver International Airport (YVR).

VAFFC has more than 30 years of experience in aviation fuel handling activities at YVR. The VAFFC South Fraser Marine Terminal (the System), includes a marine terminal

and a fuel receiving facility on the South Arm of the Fraser River and a 13-kilometre underground Pipeline to YVR to help ensure that airlines operating at YVR have a safe and reliable supply of aviation fuel.

The System, including the Pipeline is operated by SGS Canada on behalf of VAFFC. The System will meet the fuel requirements of the airlines and airport for the foreseeable future.

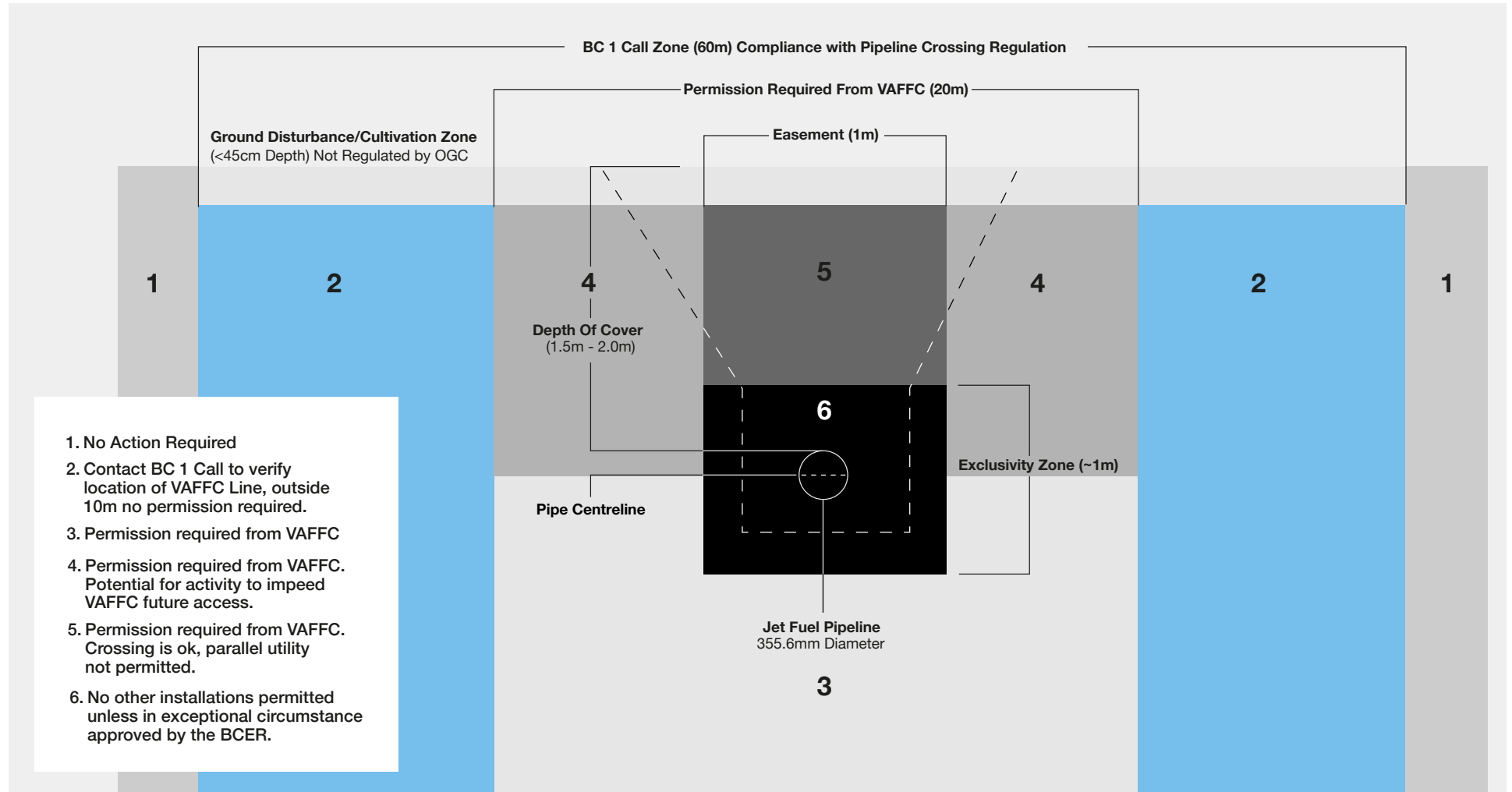


Working around the Pipeline

Right-of-way

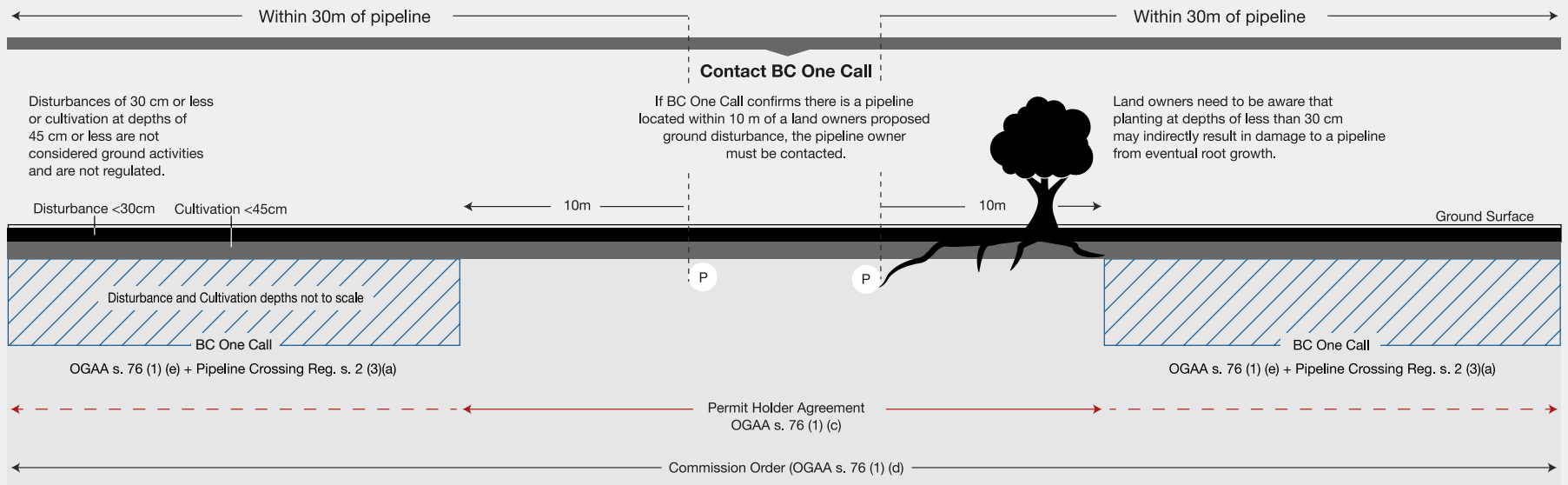
A Pipeline right-of-way (ROW) is a cleared area around a Pipeline. A safety zone (also called Prescribed Area or Controlled Area), stretches 30 meters (100 feet) on both sides.

Certain activities are not allowed within the Prescribed Area to keep the public and Pipeline operations safe. The System, including the Pipeline is operated by SGS Canada on behalf of VAFFC.



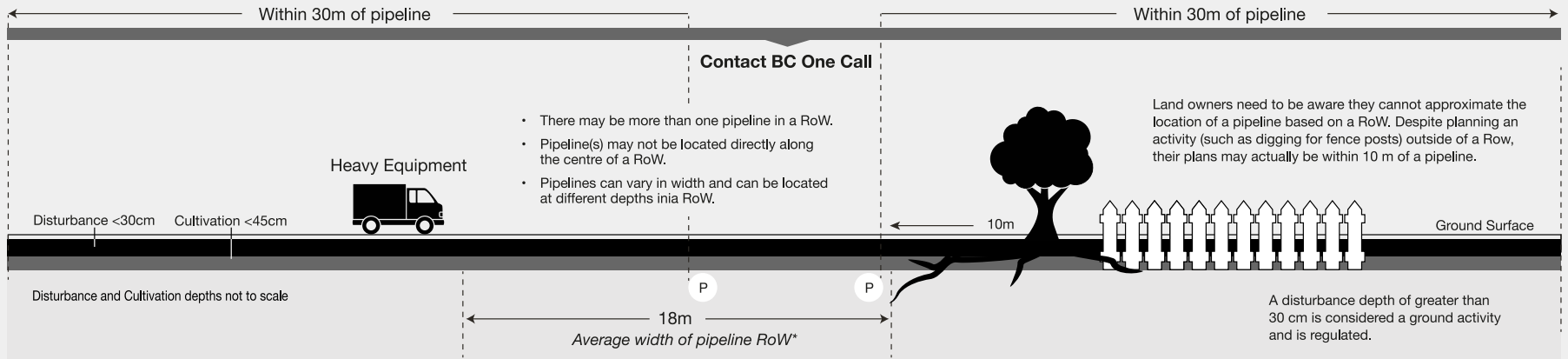
1. No Action Required
2. Contact BC 1 Call to verify location of VAFFC Line, outside 10m no permission required.
3. Permission required from VAFFC
4. Permission required from VAFFC. Potential for activity to impede VAFFC future access.
5. Permission required from VAFFC. Crossing is ok, parallel utility not permitted.
6. No other installations permitted unless in exceptional circumstance approved by the BCER.

Image 1 OGAA and Pipeline Crossing Regulation



- 1 A person must not carry out a prescribed activity within 30 m of a pipeline unless carried out in accordance with the Pipeline Crossing Regulation. A person carrying out a ground activity at least 10 m from the pipeline nearest the site of the ground activity must contact BC One Call, and if advised that there are one or more pipelines within 30 m of the proposed site of the activity, confirm with each pipeline permit holder that the pipeline is at least 10 m away from the proposed site of the activity.
- 2 If the pipeline operator confirms the proposed activity is within 10 m of the pipeline, the pipeline operator can provide specific written permission regarding the ground activity and rules to abide to if the activity is permitted to proceed. A permit holder may establish permissions that extend beyond 10 m from the pipeline.
- 3 The Commission may approve the construction or carrying out of a ground activity within 30m of a pipeline(s).

Image 2 Right of Way



*RoW locations/widths vary by situation

Top Image: OGAA and Pipeline Crossing Regulation, Bottom Image: Right of Way

Line Marker Information

Pipeline markers are located along the System at regular intervals and at all major Pipeline crossings (e.g., railways, roads, waterways). Marking methods may include paint, stakes, pins, spikes, flags, or other means that are clearly visible to those persons working within the Prescribed Area.



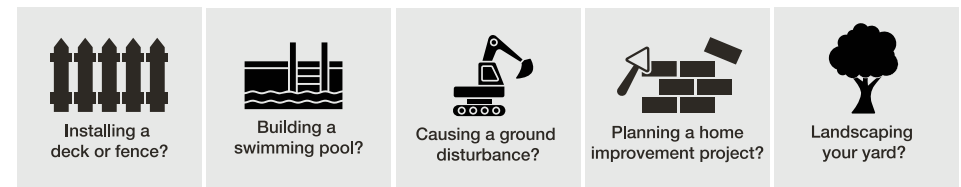
Pipeline markers provide the public and those performing activities within the prescribed area with the relative location of the System and relevant emergency contact information. All markings of the System and surrounding utilities are coloured in accordance with coding noted here:

Red	Electrical power lines, cable conduit, and lighting cables.	Purple	Reclaimed water, irrigation, and slurry lines.
Yellow	Gas, oil, steam, petroleum, and gaseous materials.	Green	Sewers and drain lines.
Orange	Communication, alarm, signal lines, cables, and conduit.	White	Proposed excavations.
Blue	Portable Water	Pink	Temporary survey markings.

Table 2: Uniform Utility Color Code [12]

Pipeline markers should not be relied upon for accurately representing the location of buried Pipeline infrastructure. Instead, locating of the Pipeline must follow the locating process and requirements described in the Getting Permission section.

Types of work that requires permission



If you're digging, **always** get permission first



Getting Permission

The Operator (SGS Canada Inc.) has registered with the provincial BC One Call organization to better manage Pipeline locate and Prescribed Area activity requests.

Before doing any work across, on, along or under the Pipeline's Prescribed Area that could cause a ground disturbance, you need to get permission by submitting a locate request through BC 1 Call.

To request a ticket, choose one of the following methods:

Calling BC 1 Call:

1-800-474-6886 (toll-free)

Visit <http://www.bc1c.ca> or <http://www.clickbeforeyoudig.com>

Reporting contact with or without damage to the Pipeline:

All individuals involved in constructing facilities over, across, along, or beneath the Pipeline, or those engaging in activities that could cause ground disturbances within the System's designated area, are mandated to report any contact with the Pipeline, irrespective of whether damage ensues. Cease any work and call any of the phone numbers below:

Operations 24 Hour Emergency Line

1-800-297-9695

Operations 24 Hour Line

1-604-238-8538 / 1-236-800-9748

BCER 24 Hour

1-800-663-3456

Emergency: Warning Signs

Visual Signs

- » Unusual substance or oily reflection on the water
- » Bubbling in water
- » Soil appearing to be tossed up
- » Dead vegetation around healthy plants

Olfactory Signs

- » Petroleum Smell
- » Hydrocarbon

Audible Signs

- » Quiet Hissing
- » Blowing Sounds
- » Loud Roar



Levels of Emergency

Minor: ON-SITE ONLY

Immediate control of the hazard with progressive resolution of the solution. There is no risk to the public or environment as the incident is contained to the site.

Level 1: LOW IMPACT

Public, personnel and environment are not at serious risk and on-site personnel can control the incident. The incident is usually confined to the company.

Level 2: MODERATE IMPACT

Public, personnel or the environment are at definite risk and external assistance is required to control the situation. The incident has an effect outside the company boundaries. External and provincial agencies must be notified.

Level 3: HIGH IMPACT

Control of the situation has been lost and presents or has caused a hazard to public, personnel and / or the environment, on or off company property. Immediate multi-agency and provincial government involvement is required.

Emergency procedures

At any level of emergency, roadblocks will be set up around the Emergency Planning Zone (EPZ) to keep traffic out of the hazard area. Residents in the immediate area will be contacted, given an update on the situation, and instructed on which precautions to take.

Early notification

At any level of emergency, VAFFC responders will contact downwind residents and residents with special needs considerations. Special needs considerations include residents who may require transportation, residents who do not have a telephone on-site and/or residents who have health or respiratory problems.

What to do in case of emergency/emergency procedures

1. If you are indoors, close all doors and windows and turn down the furnace thermostat immediately. In the summer, turn off all air conditioning.
2. Do not use any forms of ignition (lighters, fire places, wood stoves, etc.)
3. Notify VAFFC personnel via the contact information found on the back of the pamphlet.
4. Monitor the radio or television for explanation and instruction. You may also receive a call from SGS Canada Inc., the local authority, or the BCER providing further instruction or explanation.
5. If you are considering leaving the area, contact a SGS representative, the municipality, or the BCER for evacuation instructions.
6. If environmental monitoring indicates that the release may impact members of the public, an evacuation will be carried out under the direction of authorized emergency personnel. Individuals previously identified with special needs will be given top priority.

7. If you are directed to evacuate, follow the instructions that will safely move you away from the source and out of harm's way. You will also be provided with instructions to check in and register at a reception centre that is located in a secure and safe place.

Shelter-in-place

If you are advised to stay sheltered, do not leave your house or attempt to start any vehicles until a VAFFC representative advises you that it is safe to do so. The following steps should be taken if "Shelter-In-Place" procedures have been implemented:

- » Immediately gather everyone indoors and stay there.
- » Tightly close windows and outside doors. If convenient, tape the gaps around the exterior door frames.
- » Extinguish indoor wood burning fires, close flue dampers if possible.
- » Turn off appliances or equipment that either:
 - » Blow out or use indoor air, such as:
 - » Bathroom and kitchen exhaust fans;
 - » Built in vacuum systems;
 - » Clothes dryers;
 - » Gas fireplaces and stoves.
 - » Draws in outdoor air, such as:
 - » Heating ventilation and air conditioning (HVAC) systems;
 - » Fans for heat recovery ventilators or energy recovery ventilators.
- » Turn down furnace thermostats to the minimum setting, turn off air conditioners
- » Leave all inside doors open.
- » Wait in an interior room upstairs for further instruction.
- » Avoid using the telephone, except for emergencies, so that you can be contacted by VAFFC emergency response personnel.

- » Call VAFFC if you are experiencing symptoms or smelling odours (so that VAFFC can coordinate a response).
- » Even if you see people outside, do not leave until told to do so.
- » If you are unable to follow these instructions, please notify VAFFC emergency response personnel.

Procedure for evacuation

If it is necessary to evacuate, you will be contacted by telephone immediately. If you require voluntary evacuation assistance, have special needs considerations, or if there is no answer to our telephone calls, VAFFC will dispatch personnel to your residence or business to verify your location and inform you of the situation.

Special needs considerations include residents who may require transportation, residents who do not have a telephone on-site and / or residents that have health or respiratory problems.

The steps below should be followed if "evacuation" procedures have been implemented:

- » Gather all residents and bring any medicines required.
- » Lock all windows and doors.
- » Turn down thermostat and shut off any air exchange fans to outside.
- » Drive safely on the route provided, proceed directly to the Reception Centre and check in with the representative.
- » Wait for further instructions.

In some cases, there may be concern that evacuation would expose people to greater hazard than if they remain in their homes. Buildings provide a supply of clean indoor air to dilute contaminated air that infiltrates from outdoors, thus reducing the concentrations to which the occupants are exposed. Therefore, sheltering may be considered as an alternative to evacuations for short durations.

24 Hour Emergency Number



1-800-297-9695

When work needs to be done within 30 metres of the Pipeline right-of-way, you can arrange to have the Pipeline located for you within 48 hours, free of charge.

This service can be arranged by visiting the website:

BC 1 Call
(<http://www.bc1c.ca>)

1-800-474-6886 (toll-free)

Reception Centres

Richmond City Centre Community Centre
5900 Minoru Boulevard, Richmond, BC

1-604-204-8588

Steveston Community Centre
4111 Moncton Street, Richmond, BC

1-604-238-8080

West Richmond Community Centre
9180 No. 1 Road, Richmond, BC

1-604-238-8400

Government Contacts

BC Energy Regulator (BCER)
Industry 24-hour Incident Reporting
(via Emergency Management and Climate Readiness)

1-800-663-3456

Public 24-Hour Emergencies

1-877-500-2237

Public Enquiries and Concerns
(General Inquiries)

1-250-794-5200

City of Richmond

1-604-276-4000

City of Vancouver

1-604-873-7000







VAFFC / Vancouver Airport

Fuel Facilities Corporation

AN **FSM GROUP** MANAGED CORPORATION



<https://www.vancouverairportfuel.ca>

Please review and familiarize yourself with the information in this pamphlet.